



Report No. 232812

## TEST REPORT

<b>Applicant</b>	<b>GlobTek, Inc.</b>
Address	186 Veterans Dr. Northvale, NJ 07647 USA
Product	ITE power adaptor
<b>Model No.</b>	<b>GT-93020-0324</b>
Electrical Rating	Input:16-24Vac,50-60Hz,2.0A
<b>Manufacturer Name:</b>	<b>GlobTek, Inc.</b>
Address:	186 Veterans Dr. Northvale, NJ 07647 USA
Factory Name:	<b>1. GlobTek, Inc.</b>
	<b>2. GlobTek (Suzhou) Co., Ltd</b>
Address	1. 186 Veterans Dr. Northvale, NJ 07647 USA
	2. Building 4, No. 76, Jinling East Road, Suzhou Industrial Park, Suzhou, Jiangsu 215021, China
<b>Testing Laboratory</b>	<b>Nemko Shanghai Ltd.</b>
Address	7th Floor, Building 1, No. 2007 Hongmei Road, Xuhui District, Shanghai, China
Number of Samples received	1 (Sample No. 2013030101-5)
<b>Test Model:</b>	
Date of samples reception	2013-03-01
Date (s) of performance of tests	2013-03-28
Date of issue	2013-03-28
Test Requested	IP21 according to the applicant's requirements
Relating to Test Report	N/A
Test Method (standards)	The sample(s) tested consider to IEC 60529: 2001 clause 13 , 14
Test result	Pass
<b>CONCLUSION</b>	The submitted samples comply with applicant's requirements. This report applies only to the particular sample unit test and to the specific tests carried out as detailed in this report. The results contained in this report only relate to the adaptor body and except the input connector and output connector.

Prepared and checked by:

Sura Jiang

Reviewed by:

Lance Lei

This report details the results of the testing carried out on one sample. The results contained in this test report do not relate to other samples of the same product.

This report may only be reproduced and distributed in full. If the product in this report is used in any configuration other than that detailed in the report, the manufacturer must ensure the new system complies with all relevant standards.



Report No. 232812

**TEST RESULTS**

**Standards used** IEC 60529: 2001 clause 13 , 14

Clause	Requirement + Test	Result – Remark	Verdict
13.2	IP2X	Tested on sample No. 2013030101-5. The object probe, a rigid sphere without handle or guard 12.5mm diameter, is pushed against any opening of the enclosure with 30N. The probe can not entered, and no access to inward of conductive parts.	Pass
14.2.1	IP X1	Tested on sample No. 2013030101-5. The water entered the enclosure but did not access to inward of live parts.	Pass

<b>TEST PREPARATION:</b>		
1. The test samples for each test are in a clean and new condition.		
<b>TEST CONDITION:</b>		
Test A		
The protection is satisfactory if the full diameter of the probe specified in table 7 of IEC 60529 does not pass through any opening.		
1: Chamber: Rigid sphere without handle or guard 12.5 mm diameter		
2: Application force: 30 N		
Test B		
1. An apparatus which produces a uniform flow of water drops over the whole area of the enclosure.		
2. Duration of test:10 mins		
3. Water flow rate: 1 l/min		
<b>OBSERVATIONS:</b>		
Refer to above table.		
<b>ELECTRIC STRENGTH MEASUREMENTS:</b>		
test voltage applied between:	test voltage (V)	breakdown
Between live parts of different polarity	N/A	N/A
Between live parts and the mounting surface	N/A	N/A
Between live parts and metal parts of the luminare	N/A	N/A

This report details the results of the testing carried out on one sample. The results contained in this test report do not relate to other samples of the same product.

This report may only be reproduced and distributed in full. If the product in this report is used in any configuration other than that detailed in the report, the manufacturer must ensure the new system complies with all relevant standards.

Attachment 1: Pictures



Sample before test, Model 4 GT-93020-0324, Sample No. 2013030101-5

This report details the results of the testing carried out on one sample. The results contained in this test report do not relate to other samples of the same product.

This report may only be reproduced and distributed in full. If the product in this report is used in any configuration other than that detailed in the report, the manufacturer must ensure the new system complies with all relevant standards.

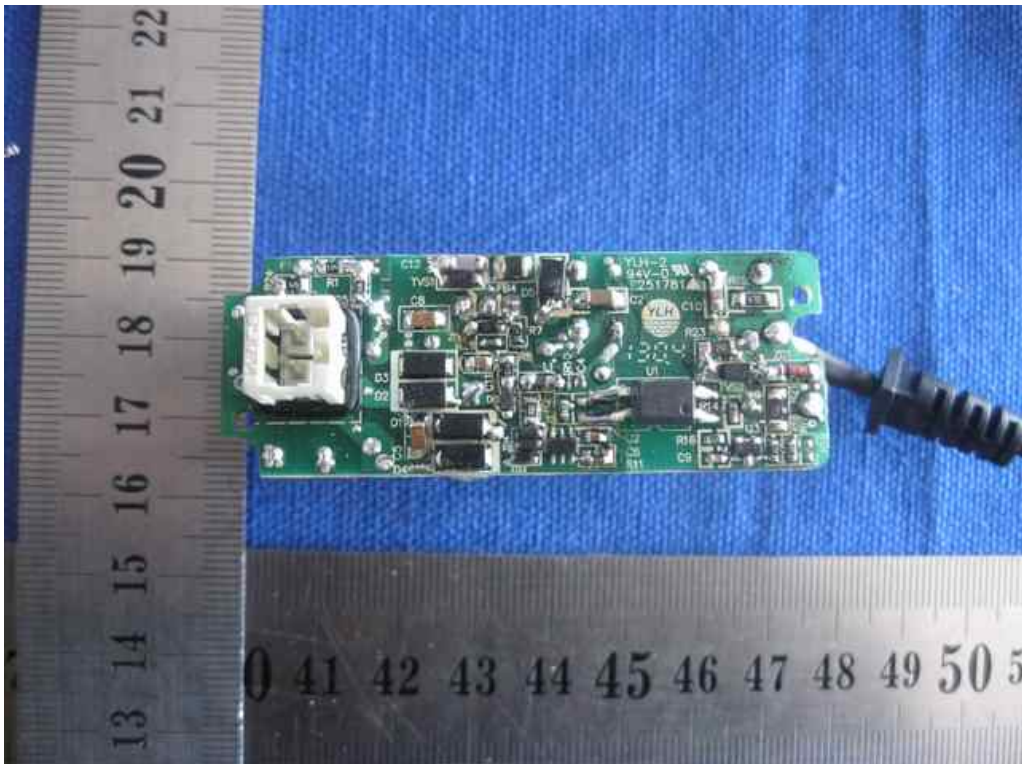


**Sample after IPX1 test, Model 4 GT-93020-0324, Sample No. 2013030101-5**

**The water entered the enclosure but did not access to inward of live parts (marked with red arrow).**

This report details the results of the testing carried out on one sample. The results contained in this test report do not relate to other samples of the same product.

This report may only be reproduced and distributed in full. If the product in this report is used in any configuration other than that detailed in the report, the manufacturer must ensure the new system complies with all relevant standards.



**Sample after IPX1 test, Model 4 GT-93020-0324, Sample No. 2013030101-5  
The water did not entered the inside enclosure.**

\*\*\*\*\*End of Report \*\*\*\*\*

This report details the results of the testing carried out on one sample. The results contained in this test report do not relate to other samples of the same product.

This report may only be reproduced and distributed in full. If the product in this report is used in any configuration other than that detailed in the report, the manufacturer must ensure the new system complies with all relevant standards.